



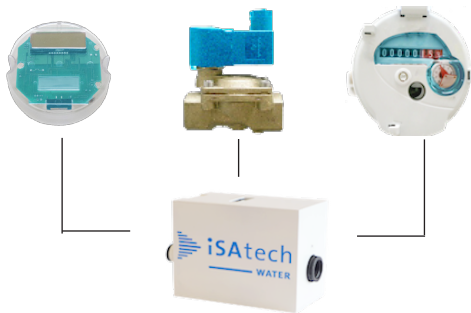
# Prepaid Meter iSA Box

## iSA Box - Compact prepaid water supply system

The iSA Box is a compact prepaid water Dispensing Unit with integrated, battery operated controller unit, bistable valve and a water meter. iSA Box is explicitly designed for the use in the domestic profile. The user is charging the credit to the unit and is constantly using the Pay as you Use credit. In this profile, time and volume based rates are implementable. Charging is realized either online via the iSAtech server (iSAtech router required) or by prepaid card. The integrated battery allows a life time of up to 8 years.

## Pay as you Use

If the user disposes of valid Pay as you Use credit, the supply system is opened and the volume is measured and accounted for.

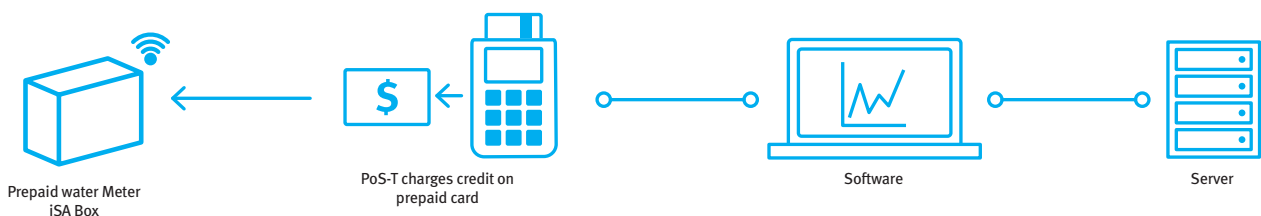


## Prepaid Meter in Households

Using the Prepaid Meter offers a considerable simplification of the settlement of water costs for the landlord or utility service. The costs for the water are paid in advance by the customer by purchasing a prepaid credit. Supply profiles with timely limited free batches of base water quantities or time oriented scaling prices allow a flexible price calculation.

## Charging of credit via Internet or by prepaid card

Prepaid credit can be purchased via an NFC-prepaid card or with a mobile phone online. The valve is opened by card or online. Lost cards can be restored including the existing credit. A reserve warning informs of the impending depletion of the credit.





# Prepaid Meter iSA Box

## Technical Data

<b>Charging</b>	Prepaid Card
	Mobile Network / Internet
<b>Technology</b>	NFC/RFID Card
	ISO/IEC 15693-2,-3; 18000-3
	433MHz / 868 MHz / 2,4 GHz*
<b>Profile</b>	Domestic
	Water quantities
	Time based supply
<b>Protection</b>	up to IP67
<b>Energy</b>	7,2 V lithium battery,
	up to 8 years
<b>Display</b>	Full Graphic LCD (55 mmx 18 mm)
<b>Security</b>	AES-256
<b>Conformity</b>	CE-Sign
	R&TTE-Directive 1999/5/EG
<b>Connection size</b>	265mm
<b>Dimensions</b>	258mm x 118 mm x 170 mm
<b>Weight</b>	2,25 kg
	* optional

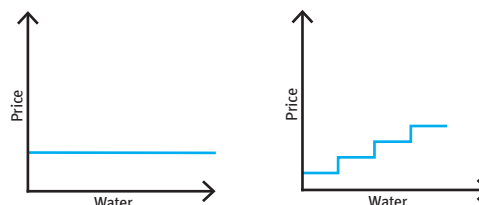
## Valve

<b>Type</b>	hydraulically operated
<b>Material</b>	Glass-Filled Nylon
<b>Diaphragm</b>	Natural Rubber
<b>Temperature</b>	Up tp 60°C
<b>Max. Pressure</b>	10 Bar
<b>Min. Pressure</b>	0.7 Bar

## Water Meter

<b>Type</b>	piston
<b>Material</b>	composite
<b>Permanent Flow Q<sub>3</sub></b>	4 h/m <sup>3</sup>
<b>Maximum Flow Q<sub>4</sub></b>	5 h/m <sup>3</sup>
<b>Transitional Flow Q<sub>2</sub></b>	40 h/l
<b>Minimum Flow Q<sub>1</sub></b>	25 h/l
<b>Ratio (Q<sub>3</sub>/Q<sub>1</sub>)</b>	R 160

## Rates



<b>Fixed Price</b>	fixed prices per liter
<b>Scaling Prices</b>	Price per liter is depending on the already consumed amount of water